



FEBRUARY 2023

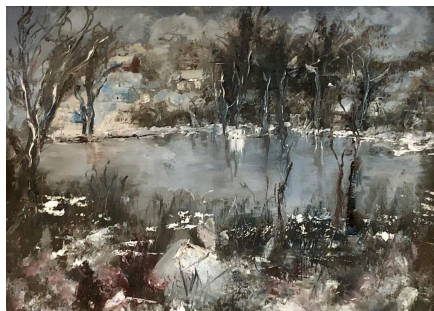
# Steeple Notes

First Church of Rowley United Church of Christ  
175 Main Street • P.O. Box 364 • Rowley, MA 01969

## Into Creation

In last month's Steeple Notes I shared the news of my rekindled love affair with painting. I like to paint outdoor scenes. My approach has been to visit interesting places, take lots of return home and This often proved to with tedious details, section, and making sometimes over a

As I look back at is usually too fussy, ways. An artist can



photographs, and then work on a painting inside. be difficult as I wrestled repainting section after all sorts of corrections period of many weeks. this work, I have to say it and lacks vitality in many also do painting outside.

However, this is challenging, especially in the winter. The French call this en plein air – which means “in the open”. In the 19th century this painting practice allowed the Impressionists to capture the more ephemeral qualities of the environment. They were able to reflect the natural light like never before.

A few days ago, I discovered this miracle myself. In an impulse I stepped on to the back deck of my house. Suddenly, brushes seemed to move on their own. My eye saw the kaleidoscope of light on the patches of snow, like no photograph could ever convey. Shivering in the cold, in less than 90 minutes, I completed the painting, which is included above. The irony in this is that on numerous occasions using photographs I had tried and failed to capture in oil paints the image of this pond in my backyard. Now it was alive.

This is a spiritual lesson for us all. If we are looking for light, for love, for beauty, or for any other gift of creation - it is in our own backyard - in the moment - under the open sky of creation.

Why don't you go and take a look right now?

Blessings and fond regards,  
Rev. Tom

## Sunday Worship Service

10am

Reverend Tom Bentley

### Pancake Breakfast

February 11  
8-9:30am



### Turkey Supper

February 25  
4pm & 6pm sittings



### Create a Mug

February 11  
3-5:30pm



Paint a ceramic mug for  
someone you love!



**Yes, it's getting cold, so come warm  
up at our Bookworm Cafe this  
Saturday, February 4, 9am - 2pm!**

Coffee, Soups, Chili, and visiting authors!



We continue to slowly ramp up our music program. Starting in February, the Inspirational Singers will be singing two Sundays each month. The group will be singing on the second and fourth Sundays. As always, new singers are welcome to sing with the group for any amount of time they like! Sing for a Sunday, sing for a season, or sing for the whole year! Please contact any member of the Inspirational Singers or director Karl Schmuck for more information.



Several church members got together in December to sing Christmas Carols for the Community. Many Thanks to Paul Chang for organizing this event - our Rowley neighbors seemed to enjoy being caroled to, and it was a great way to get into the Christmas spirit!



## Spaghetti Supper a Great Success!

*From Neil and Liz Butler –*

*Thank you for those who were able to join us for the Spaghetti Dinner. Although dinner was free, we encouraged donations for local food pantries. With the generosity of our community, we raised \$500 in donations!! Five local food pantries will receive \$100 each. It was an amazing night of community and well enjoyed by all who attended. Thank you!*



A shout out to Lisa Stevens, Mike Blouin, Neil & Liz Butler, their kids, grandkids and countless other volunteers who put on the Spaghetti Supper!

## February Birthdays

Gerry Ernstrom	2/6	Joanne Blouin	2/19
Patti Cummings	2/13	John Kneeland	2/28
Alexandra Flodman	2/11	Nancy Hill	2/22
Ken Sanford	2/21	Dede Todd	2/28

